

NATIONAL CENTRE FOR SOCIAL RESEARCH, EKKE

14-18 Messoghion Av.-Athens 11527-GREECE
www.ekke.gr

Director: Prof. J. Yfantopoulos

The National Centre for Social Research (EKKE) constitutes the evolution of the Centre for Social Sciences, which was founded in 1959. EKKE is a Legal Entity under Public Law. Its headquarters are in Athens. It falls under the jurisdiction of the General Secretariat of Research and Technology of the Ministry of Development and is the only public agency in the area of social research.

The research personnel of EKKE consists of scientists of various disciplines: sociologists; anthropologists; political scientists; geographers; economists; demographers; criminologists; statisticians; historians; etc. The comprehensiveness of its scientific work is enhanced by the activities of administrative and specialised technical personnel, some of whom work in the fully equipped Computer Centre.

EKKE strives to achieve a mutually beneficial relationship between its researchers and the entire scientific community, as well as with other research centres and with institutions of Higher Education, both in Greece and in the European Union.

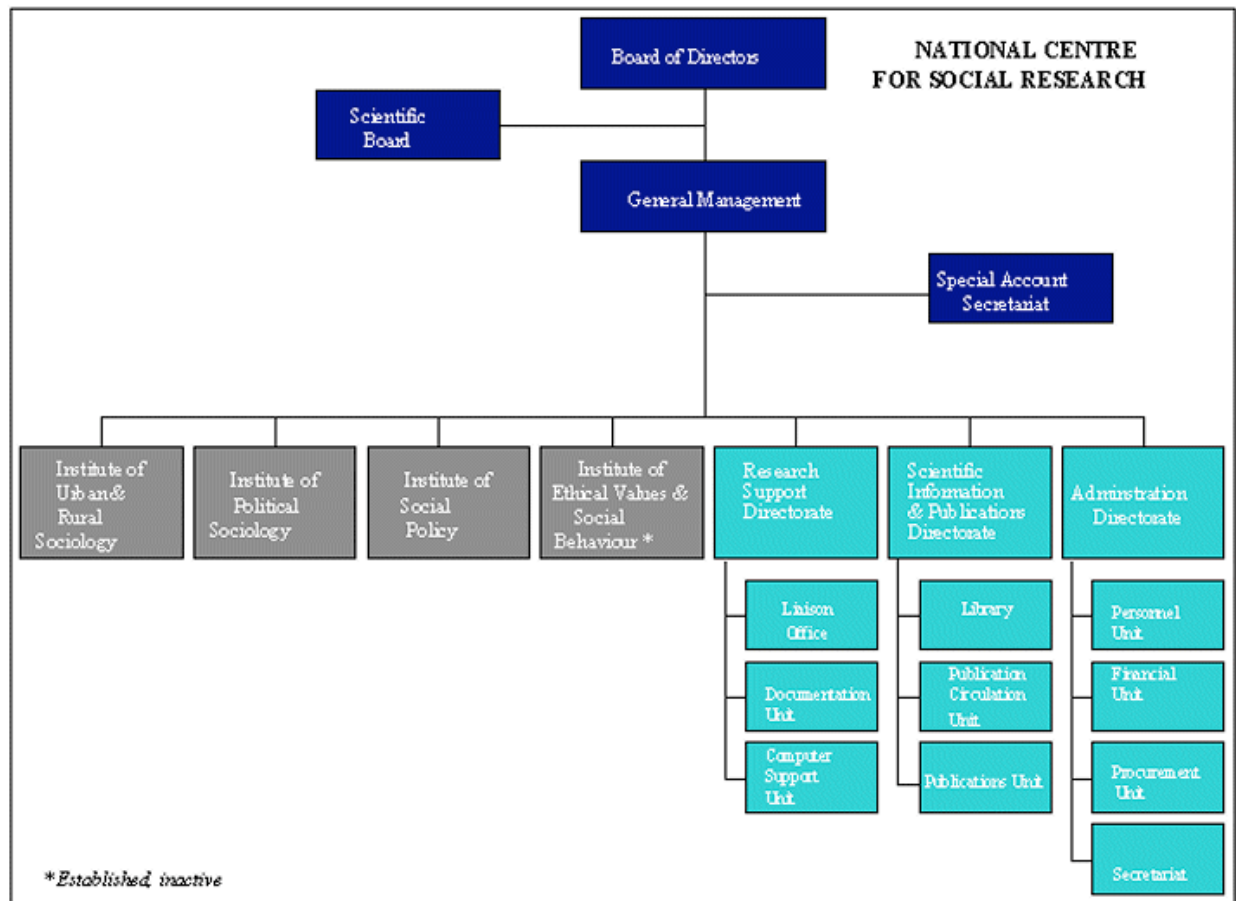
The centre is comprised of three active Research Institutes:

- . The Institute of Urban and Rural Sociology (IURS)
Director: Prof. Th. Maloutas
- . The Institute of Social Policy (ISP)
Director: Prof. I. Sakellis
- . The Institute of Political Sociology (IPS)
Deputy Director: Dr J. Tsiganou

STRATEGIC OPERATIONAL FRAMEWORKS

- . Society and Space
- . Citizens, Politics and Social Transformation
- . The Welfare State: Inequalities and Exclusion, within the context of the information society and research infrastructure.

Organisational Chart



EKKE's research strategy and key areas evolve around the following axes:

- Developing viewpoints, conceptual frameworks and research methods that permit an in-depth understanding of the evolving social reality.
- Linking EKKE's activities with the needs of Greek citizens.
- Linking scientific research with the policy-making process: The development of viewpoints and know-how for state policies and innovative actions within key areas of Greek society. The study and evaluation of Greek reality will link pragmatic social needs to policy-making, thereby optimizing the results over time.
- Contributing towards the articulation of national guidelines and operational plans, in co-operation with Greek policy-making institutions.
- Developing the appropriate research infrastructure and systematically monitoring research fields through "observatories" and "data banks."
- Promoting and disseminating research methods and findings, both in Greece and abroad, via the publication of scientific studies, the organisation of conferences, seminars, lectures, etc.